



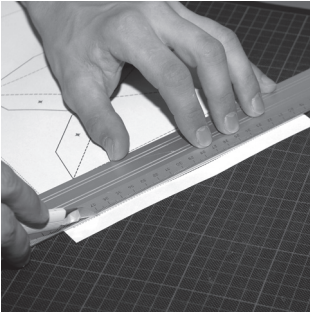
foldschool
cardboard furniture

key
 ← → = structural direction
 — = cut
 - - - = fold
 ⊗ = perforate

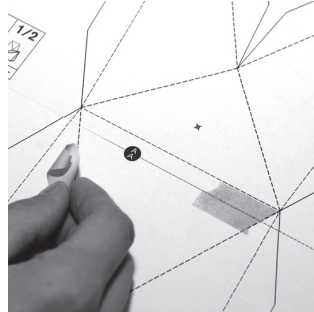
materials and tools

- > single-layered cardboard
- > paper
- > printer
- > cutter
- > ruler
- > folding tool
- > cutting mat
- > spray adhesive
- > needle
- > glue
- > masking tape

how to



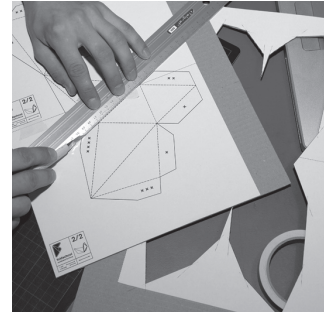
01 cut off – cut along the dotted grey lines in order to crop each fragment of the pattern.



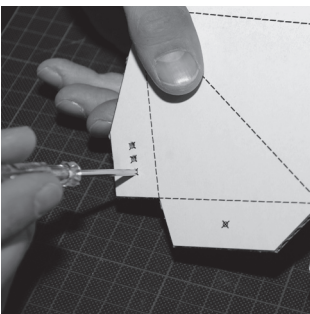
02 join – complete the pattern by fitting together the matching letters. Use masking tape to keep together the single sheets.



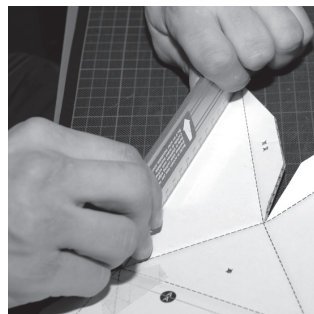
03 spray – apply the adhesive on the flipside of the pattern and stick it on the cardboard. Beware of the unequal surfaces of cardboard.



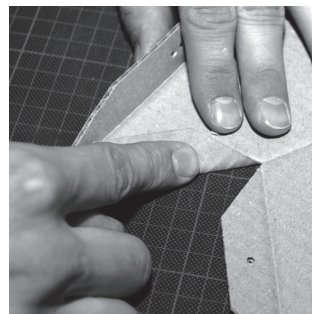
04 cut out – the structural direction of the cardboard has to correspond with the arrow on the pattern. Cut along the grey lines.



05 perforate – use a needle to transfer the crosshairs to the cardboard.



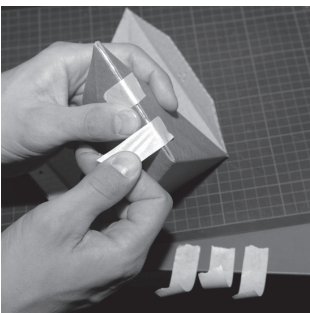
06 press – push the border of the ruler along the dashed lines into the cardboard. Now remove the pattern.



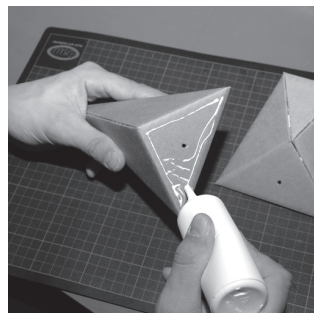
07 fold – flatten the cardboard by pressing your finger along the folds.



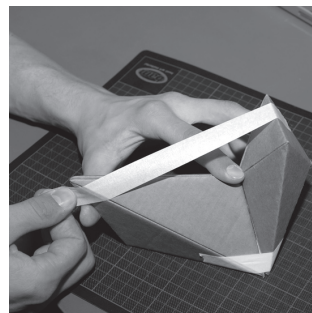
08 glue 1 – stick together the matching lugs in ascending order.



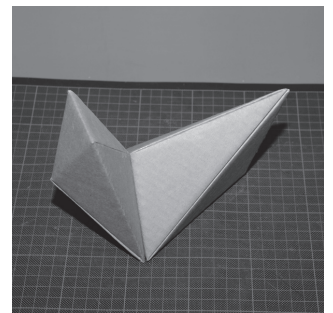
09 fix 1 – tightly stick the edges with masking tape.



10 glue 2 – stick together the matching faces in ascending order.



11 fix 2 – tightly stick the elements with masking tape.



12 done